

[Student Information]

Name: _____
Student ID: _____
Teacher #: _____
Branch: _____

Perfect Score: 90
Number Incorrect: _____
Final Score: _____
Score Rating: PASS* / RAL
Grader Teacher #: _____

* Passing Score is 63 or higher

**Winds
Treble Clef
Level 3**

Certificate of Merit®

Practice Theory Test

2016



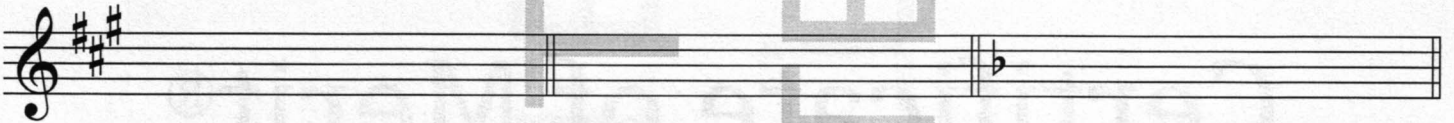
Winds Treble Clef Level 3

1. Name the Major key for each of the following key signatures. (4 points total / 1 point each)



____ Major ____ Major ____ Major ____ Major

2. Name the minor key for each of the following key signatures. (3 points total / 1 point each)



____ minor ____ minor ____ minor

3. Add sharps (#) or flats (b) to complete the following Major and minor scales.
(5 points total / 1 point each)

A Major



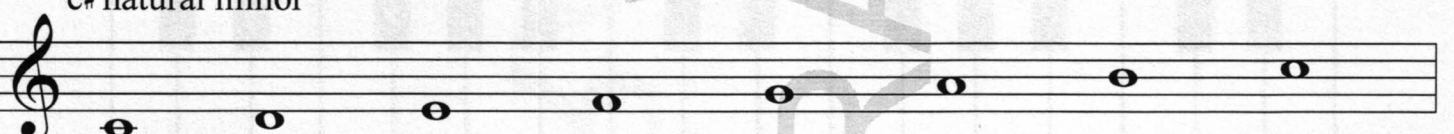
E^b Major



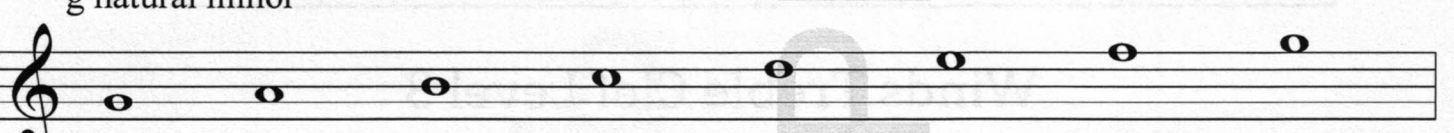
G Major



c# natural minor



g natural minor



4. Check the correct Major scale interval pattern. (1 point total)

W = whole step; H = half step.

___ W W H W W W H

___ W H W W H W W

___ W W W H W W H

5. Identify each triad and indicate whether it is Major or minor. (3 points total / 1 point each)

The first one has been given.

A musical staff in treble clef showing four triads. The first triad is C Major (C4, E4, G4). The second triad is D minor (D4, F4, A4). The third triad is E major (E4, G4, B4). The fourth triad is F# minor (F#4, A4, C5).

C Major

6. Write the following arpeggios. The first one has been given. (4 points total / 1 point each)

C Major

A^b Major

c minor

D Major

f# minor

A musical staff in treble clef showing an arpeggio for C Major (C4, E4, G4, C5) and three empty measures for the other arpeggios.

7. Check the correct interval for each pair of notes. (4 points total / 1 point each)

A musical staff in treble clef showing four pairs of notes: C4 and D#4, Bb4 and C5, E4 and F#4, G#4 and A#4.

___ whole step
___ half step

___ whole step
___ half step

___ whole step
___ half step

___ whole step
___ half step

8. Check the correct interval for each pair of notes. (4 points total / 1 point each)

A musical staff in treble clef showing four pairs of notes: C4 and E4, C4 and G4, C4 and B4, C4 and C5.

___ 2nd
___ 3rd
___ 4th

___ 7th
___ octave (8th)
___ unison

___ 5th
___ 6th
___ 7th

___ unison
___ 2nd
___ 3rd

9. Write the letter name for each note. (4 points total / 1 point each)

10. For each example, check the rest or group of rests that will receive the same number of beats. (3 points total / 1 point each)

a. _____ _____
 _____ _____
 _____ _____

b. _____ _____
 _____ _____
 _____ _____

c. _____ _____
 _____ _____
 _____ _____

11. Check the type of note that will receive one beat for each time signature. (2 points total / 1 point each)

a. _____
 _____ _____
 _____ _____

b. _____
 _____ _____
 _____ _____

12. Fill in the blanks with the correct number of beats. (6 points total / 1 point each)

a. In **C**, a gets _____ beat(s).
 b. In **C**, a gets _____ beat(s).
 c. In **C**, a gets _____ beat(s).

d. In $\frac{2}{4}$, a gets _____ beat(s).
 e. In $\frac{2}{4}$, a gets _____ beat(s).
 f. In $\frac{2}{4}$, a gets _____ beat(s).

13. Check the correct counting for each example. (2 points total / 1 point each)

a.

b.


_____ 1 & 2 & 3 & 4 &
 _____ 1 & 2 & 3 & 4 &

_____ 1 & 2 & 3 & 1 & 2 & 3 &
 _____ 1 2 3 4 5 6 1 2 3 4 5 6


14. Name the type of note or rest for each of the following examples. (6 points total / 1 point each)


Choose terms from the Word Bank.

a.  _____

d.  _____

b.  _____

e.  _____

c.  _____

f.  _____

Word Bank
dotted eighth note
half rest
quarter note
sixteenth notes
sixteenth rest
whole note

15. Check the correct tempo for each definition. (2 points total / 1 point each)

a. moderate walking tempo *Adagio*
 Andante

b. fast tempo *Moderato*
 Allegro

16. Check the term for each definition. (10 points total / 1 point each)

a. very, very soft *pianississimo*
 pianissimo

b. gradually softer *ritardando*
 decrescendo

c. play louder, with emphasis *legato*
 accent

d. return to the original tempo *alla breve*
 a tempo

e. hold longer *fermata*
 tenuto

f. return to the sign *Da Capo*
 Dal Segno

g. the way notes are played or attacked *accidentals*
 articulations

h. gradually faster *crescendo*
 accelerando

i. separated, detached *slur*
 staccato

j. the distance between two notes *interval*
 dynamics

Andante

1 2 3 4

5 6 7 8 **Fine**

9 *gva* 10 *loco* 11 12 **D.C. al Fine**

Answer questions 17-24 about the above musical example. (8 points total / 1 point each)

17. What is the key? A \flat Major
 f minor
18. How many beats are in each measure? 6 beats
 8 beats
19. Which type of note receives one beat? eighth note
 quarter note
20. Check the correct name for the circled arpeggio in measure 3. E \flat Major Arpeggio
 A \flat Major Arpeggio
21. The symbol above measure 9 indicates: to accent the notes
 to play notes an octave higher
 to hold the note longer
22. The term "loco" above measure 11 indicates: to play faster
 to return to the original tempo
 to return to the written pitches
23. What happens after measure 12? go back to the sign
 go back to the beginning
 the piece ends
24. In which measure does this musical example end? measure 4
 measure 8
 measure 12

Musical score in D major, 2/4 time, marked *Lento*. The score consists of 14 measures. Measures 1-6 are on the first staff, and measures 7-14 are on the second staff. Dynamics include *p*, *mp*, *mf*, and *f*. A fermata is placed over the final note in measure 14. Circled notes are present in measures 4, 7, 8, and 11.

Answer questions 25-32 about the above musical example. (10 points total / 1 point each)

25. What is the key? D Major
 b minor
26. How many beats are in each measure? 2 beats
 4 beats
27. Which type of note receives one beat? quarter note
 half note
28. What is the Italian term for the time signature? *octava*
 alla breve
29. At what speed will this musical example be played? quite slow
 moderate walking tempo
30. Check the correct interval for the circled notes in the following measures.
- | | | | |
|-------|------------------------------|------------------------------|------------------------------|
| m. 4: | <input type="checkbox"/> 3rd | <input type="checkbox"/> 4th | <input type="checkbox"/> 5th |
| m. 7: | <input type="checkbox"/> 2nd | <input type="checkbox"/> 3rd | <input type="checkbox"/> 4th |
| m. 8: | <input type="checkbox"/> 2nd | <input type="checkbox"/> 3rd | <input type="checkbox"/> 4th |
31. The notes in measures 11 & 12 form a scale. What type of scale is it? Major scale
 Natural minor scale
32. The symbol above the note in measure 14 indicates the note is: held longer
 played separated
 played an octave higher

